

DAILY REPORT #87 – DORIS NORTH INFRASTRUCTURE/ NORTH DAM

Prepared by:	Iozsef Miskolczi Megan Miller	Date:	2012.04.01
Reviewed by:		Project #:	1CH008.058.0320
Role	Company	Personnel – Position	On Site
Client	Hope Bay Mining Limited (HBML)	Angela Holzapfel – ESR Compliance Manager David Vokey – ESR Coordinator Don Ethelston – HSLP Advisor Dean Wold - Safety Jill Turk – ESR Coordinator Katsky Venter – ESR Manger Michelle Tanquay – ESR Site Manager Stirling Kelly – HSLP Advisor	No No No No Yes Yes No No
	JDS	Lloyd Jackson – Mechanical Superintendent Doug Fielding – Construction Manager Ishan Fechter – Construction Coordinator Jerry Graham – Construction Manager Kevin Whieldon – Project Coordinator Mark Valeriote – Construction Manager Calvin Goldschmidt – Construction Coordinator	No No No Yes No No Yes
Engineering Design Consultants	SRK Consulting (Canada) Inc.	John Kurylo – Site Engineer Megan Miller – Site Engineer Lawrence Borowski – Site Engineer Murray McGregor – Site Engineer Iozsef Miskolczi – Site Engineer Lowell Wade – Senior Engineer	No Yes No No Yes No
	EBA Engineering Consultants Ltd.	Jeff Orr – Project Manager Jennifer Stirling – Geologist Thomas Bradshaw – Junior Engineer Ernest Palczewski – Geologist	No No No Yes
Earthworks Contractor	Nuna Logistics	Benny Vostermans – Foreman (Day Shift) Doug Haverland – Area Superintendent Gary Sodhi – Field Engineer Georges Cornelissen – Survey Manager Jeff Roberts - Surveyor Jim Cardinal – Foreman (Day Shift) Jordan Gunter – Foreman Kevin Kozdrowski – Foreman Kyle Kuntz – Project Engineer Margaret Caley – Surveyor Matt McKay – Civil Supervisor Mike MacMaster – Surveyor Mike Price – Field Engineer Rick Peter – Foreman (Night Shift) Ron MacMaster – Surveyor Simon Chipper – Civil Supervisor	Yes No Yes Yes No Yes No No No No No Yes No Yes No No
External Distribution List:	SRK: Maritz Rykaart, Lowell Wade, Seema Kang, Silkie Wong EBA: Robert Zschuppe Nuna: Chris Petrovic HBML: Dave Power		
This Construction Daily Report is produced as an internal communication document between SRK site and head office staff. Any distribution of this report outside of SRK is done as a courtesy, and the information contained in this report are for information only to those external parties.			

WEATHER (ROBERTS BAY)

<http://www.wunderground.com/weatherstation/WXDailyHistory.asp?ID=INUNAVUT3>

Temperature/Wind Chill (°C)	6AM:-15/-23	12PM: -13/-21	6 PM: -10/-16	12 AM: -11/-20
Precipitation (mm)	Rain: None		Snow: None	
Conditions	Day Shift: Overcast with sunny periods, cold wind.		Night Shift: Overcast. Light to moderate wind.	
Daily norms (°C)	24 hour high: -7.0		24 hour low: -16.0	

HEALTH, SAFETY AND ENVIRONMENT

- Megan Miller and Iozsef Miskolczi attended the weekly Nuna safety meeting.

COMMENTS, CORRESPONDENCE AND ACTIVITIES**DAILY MEETING WITH NUNA AND HBML TEAM:**

- The daily meeting was attended by Nuna [Lucas Evans, Trevor Sorken], ESR [Katsky Venter], JDS [Jerry Graham], SRK [Megan Miller]

Topic	Status
Health and Safety and Environment	<ul style="list-style-type: none"> Safety personnel did not attend the meeting. JDS reported on environmental incident. The day tank for the power plant was overfilled into the secondary containment; all fuel was contained in the secondary containment. Cleaning of excavator for Jetty work and timing of the work was discussed.
North Dam	<ul style="list-style-type: none"> Yesterday the last bit of material from the FCP was placed on the dam. Nuna plans on placing ROQ and transition today.
Water Management Structures	<ul style="list-style-type: none"> Nuna plans on completing the diversion berm within the next 2 to 3 days. Layfield will be leaving site tomorrow. Nuna plans on backfilling the sumps today. The sump lids will be insulated once Tli Cho is free from working at the berm.
General	<ul style="list-style-type: none"> A blast is planned in Quarry#2 for 3 pm. Drilling holes for the gate to the burn pan was discussed.

SURVEY:

Required	•
Data Received	<ul style="list-style-type: none"> GCL panels placed March 30, 2012 and March 31, 2012 Overliner material placed March 30, 2012 and March 31, 2012
Outstanding	•
Upcoming	<ul style="list-style-type: none"> Diversion Berm material as placed Dam material (ongoing)

NORTH DAM/FROZEN CORE PLANT PAD:**Multi-bead Thermistors**

- No Multi-bead thermistor readings were collected.

Frozen Core Plant

- Mixing of core material is now complete.
- This section will be removed from the Daily Report starting tomorrow.*

Dam Shell**Dayshift**

- Placement of ROQ material on the transition material on the upstream side of the core continued on day shift. This lift was extended to approximately station 0+50.
- The CAT 330 excavator placed transition material in a third lift/final lift south of station 0+45. This material was compacted.
- The transition material south of station 0+50 was walked with survey; this area was approved for ROQ placement.
- Some drifted snow along the upstream side of the ROQ material placed last year was removed with the excavator and hauled away.
- A second lift of transition material was placed along the slope above the 32.5 elevation from 0+50 to 0+80. No compaction of this lift was observed.

Nightshift

- Placement of the third lift of transition material was completed at the beginning of the nightshift.
 - The placed and partially compacted final lift was inspected, and in general it was found to be conforming to the specs for lift thickness. The final thickness was noted to be thinner by about 20 cm in one localised area. Additional transition material was placed in this area and compacted.
 - More compaction is required on the crest of the transition material.
- Transition material placement around the frozen core is now complete.
- The second lift of ROQ was placed in the upstream side, progressing south from Station 1+00. Lift thickness was 1.8 m; ROQ quality was good, with no oversize.

Key Trench/ Central Core

- Complete!
- *This section will be removed from the Daily Report starting tomorrow.*

Field Geotechnical Testing, Laboratory and Sampling

- No single bead thermistors were monitored or installed.
- Cleanup of the lab in preparation for EBA to leave site occurred.
- No new material testing was started today. The test taken yesterday were completed and that will be the final material testing in the lab.
- *This section will be removed from the Daily Report starting tomorrow.*

MOISTURE CONTENT SUMMARY

Collected	Testing In Progress	Completed
None	None	HB12-FCP-COVER-MC415-QA-20120331 HB12-FCP-COVER-MC416-QA-20120331 HB12-FCP-COVER-MC417-QA-20120331 HB12-ND-COVER-MC418-QA-20120331 HB12-ND-COVER-MC419-QA-20120331 HB12-ND-COVER-MC420-QA-20120331

DORIS NORTH DIVERSION BERM:

- Geotextile and bentonite 'plug' were placed from the edge of the area where the liner slid to the beginning of the berm alignment. Crush was put on the top of the berm for this section.
- ROQ 'bridges' (piles of ROQ along the slope) were placed to keep the liner from sliding down.
- Labourers started clearing snow from the section of the diversion berm which was blown in. The CAT 325 excavator assisted in removing snow.
- Destructive testing for the HDPE liner was witnessed for destructive test 2 and part of destructive test 5. Destructive test 3 and 4 were also performed but not witnessed by SRK.
- The bulk of the snow from the blown-in portion of the keytrench was removed on nightshift. Some more

detailed cleaning will be required before the bentonite plug can be completed.

SUMPS:

- Sump 1 was backfilled with overburden material; this material did not appear to be compacted.
- Sump 2 was partially backfilled with overburden material.

QUARRY #2:

- A blast occurred in Quarry 2 at approximately 3 pm.
- ROQ material for the dam and diversion berm was loaded from the Quarry.

GENERAL:

- Snow from the North Dam was pushed out onto Tail Lake, away from the discharge pipe intake.
- As all tasks related to the construction of the frozen core are now complete, starting with tomorrow's Daily Report certain sections will be removed.
- Georges Cornelissen (Nuna Survey) is leaving site tomorrow. Survey support on nightshift will be discontinued starting tomorrow.

PHOTOS:

Photo 1: Progress photo of North Dam from photo point 1. Looking south west.



Photo 2: Progress photo of North Dam from photo point 2. Looking north west.



Photo 3: Progress photo of North Dam from road to FCP. Looking south west along dam alignment.



Photo 4: Diversion Berm – View of geotextile placed in the corner near the start of the diversion berm alignment.



Photo 5: Sump – Overburden material in the annulus of sump 2.

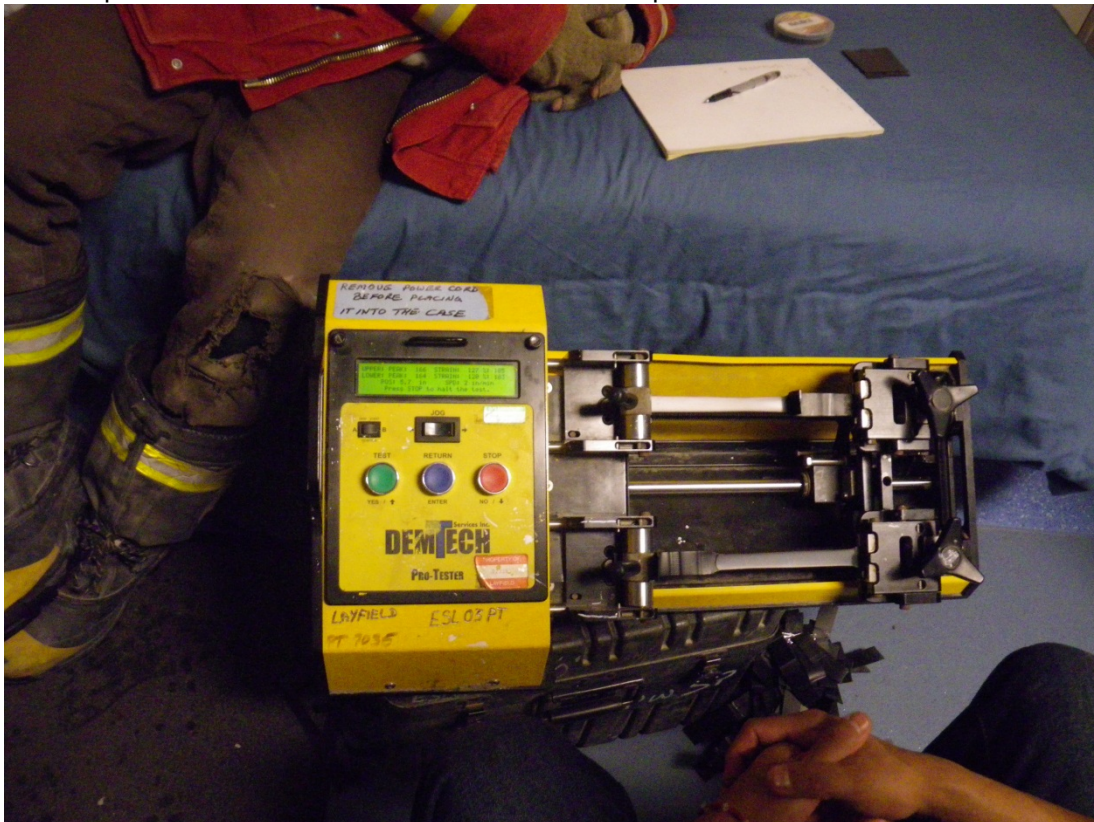


Photo 6: Diversion Berm – Witnessing destructive testing of HDPE liner for the diversion berm.



Photo 7: Diversion Berm – Labourers cleaning snow from the geotextile and liner.



Photo 9: North Dam – progress photo of ROQ placement. Photo looking north-west from Sta. 0+60.

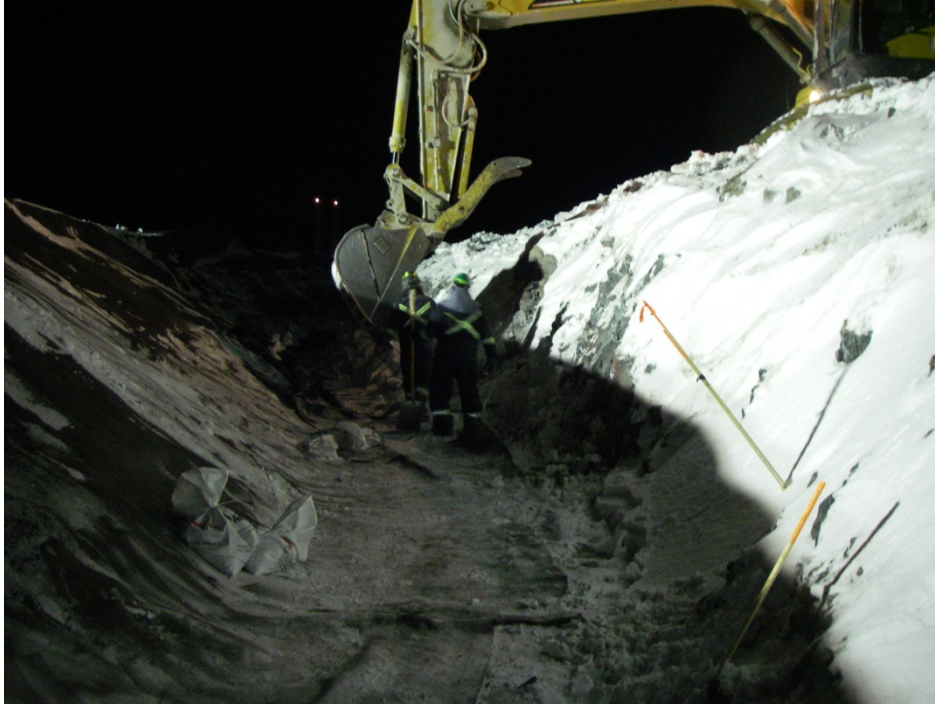


Photo 10: Diversion Berm – workers clearing the snow drifts from the keytrench with support from an excavator. Photo looking west from Sta. 0+520.

FIGURES:

Figure 1: North Dam Progress Figure

